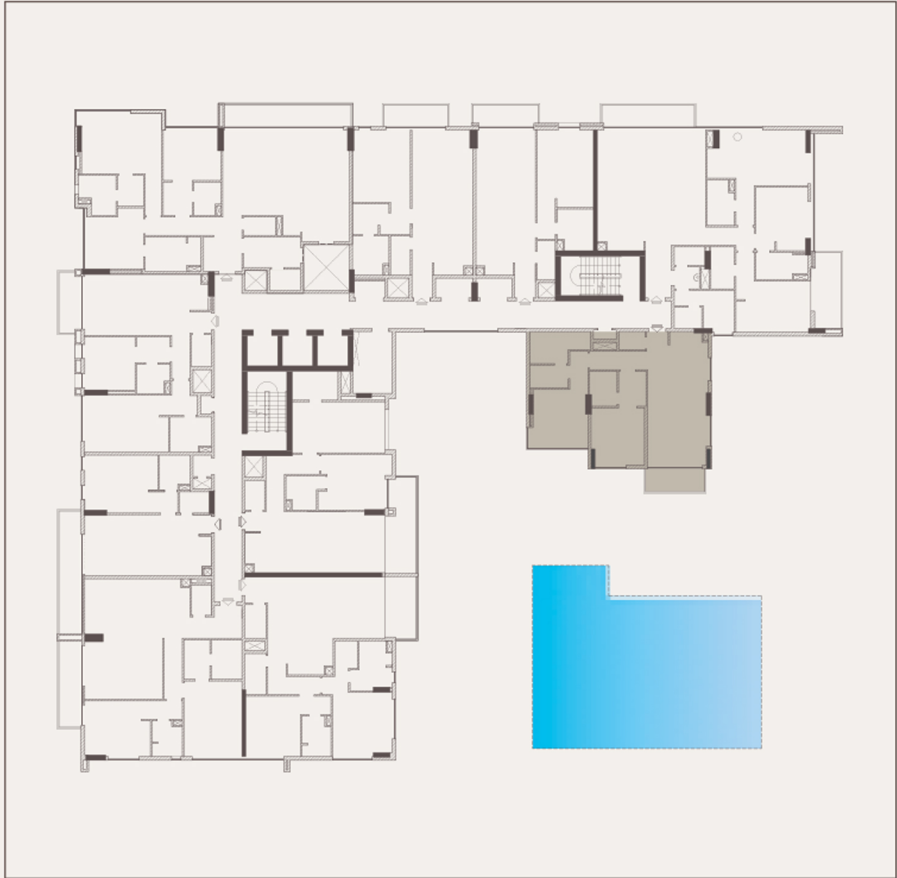
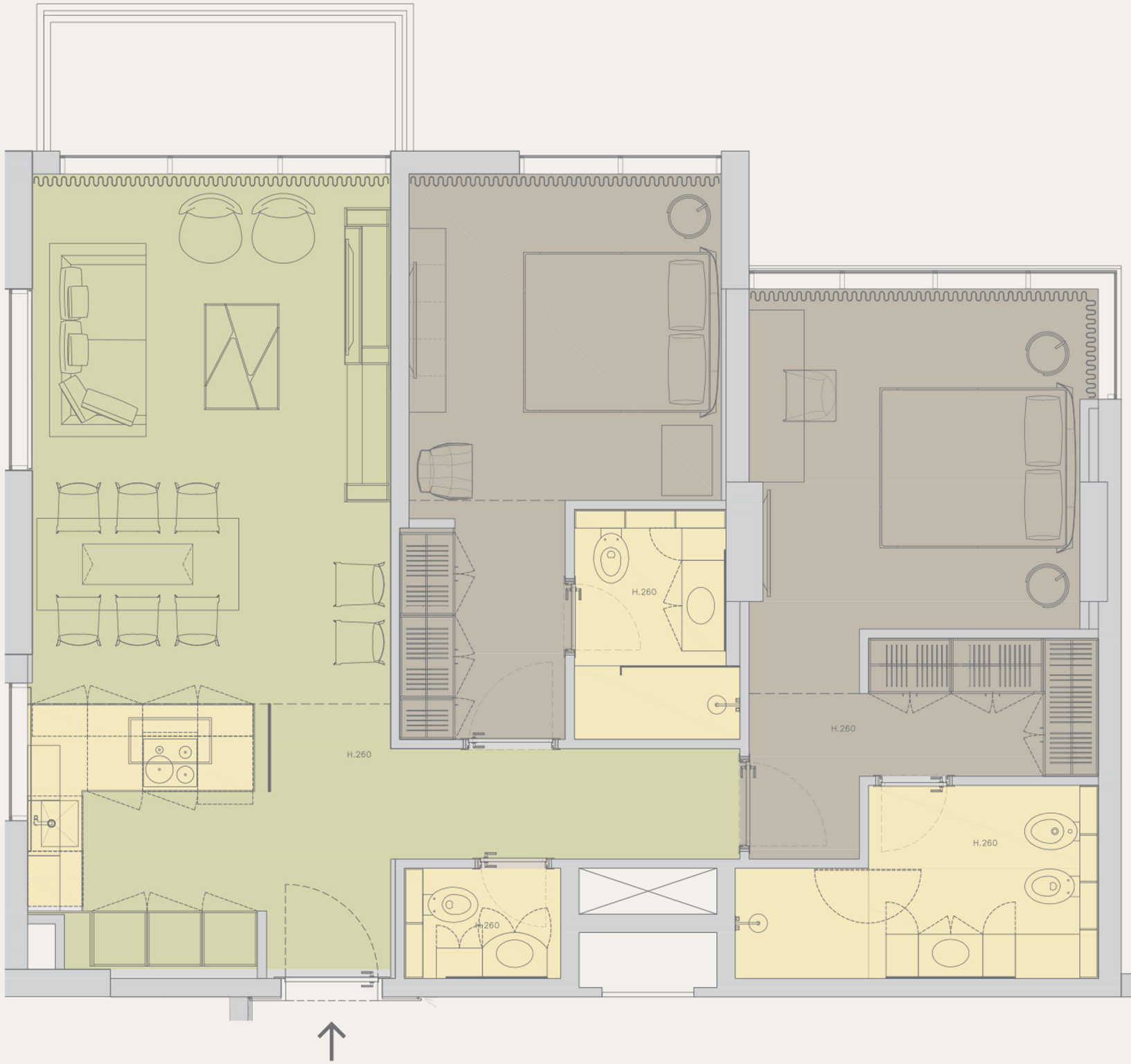


Typical floor plan

2 Bedroom



Unit	Floor	Area	Balcony	Terrace	Total
210	2nd floor	1,135.65	70.09		1,205.74
310	3rd floor	1,135.65	70.09	-	1,205.74
410	4th floor	1,135.65	70.09	-	1,205.74
510	5th floor	1,135.65	70.09	-	1,205.74
610	6th floor	1,135.65	70.09	-	1,205.74
709	7th floor	1,135.65	70.09	-	1,205.74
809	8th floor	1,135.65	70.09	-	1,205.74
909	9th floor	1,135.65	70.09	-	1,205.74
1009	10th floor	1,135.65	70.09	-	1,205.74